

Installation Guide

PlusGlide 47 system – Sliding doors

Maximum sash width = 2500mm

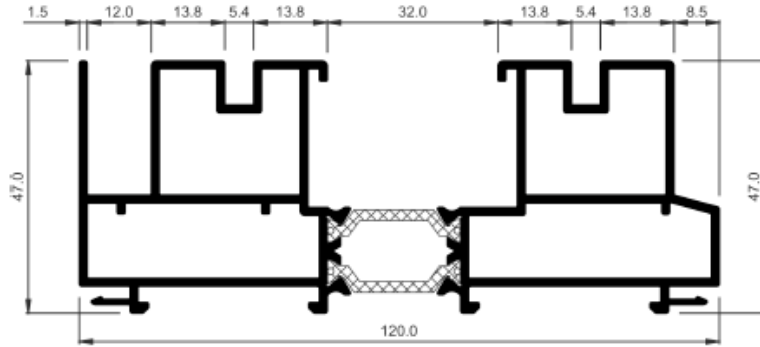
Maximum sash height = 3000mm

Maximum weight / sash = 280 kg

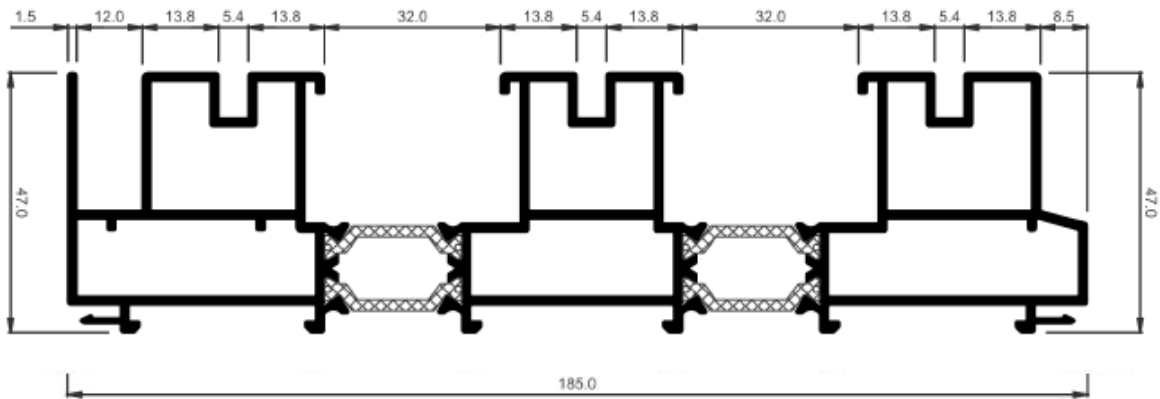


Frame Options

- 2 track frame 4731

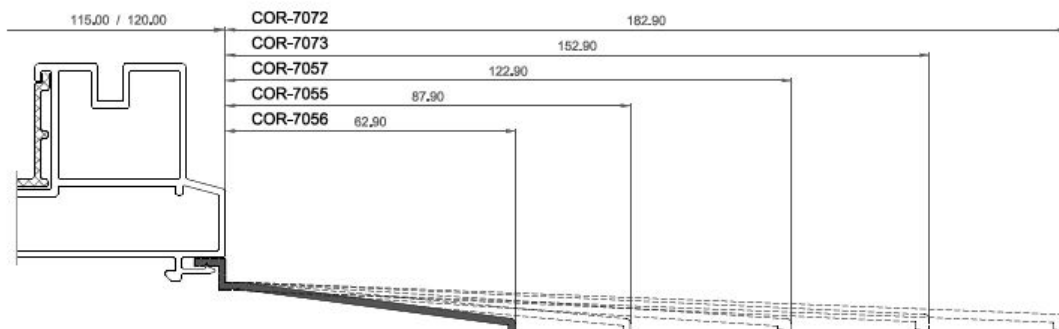


- 3 track frame 4781



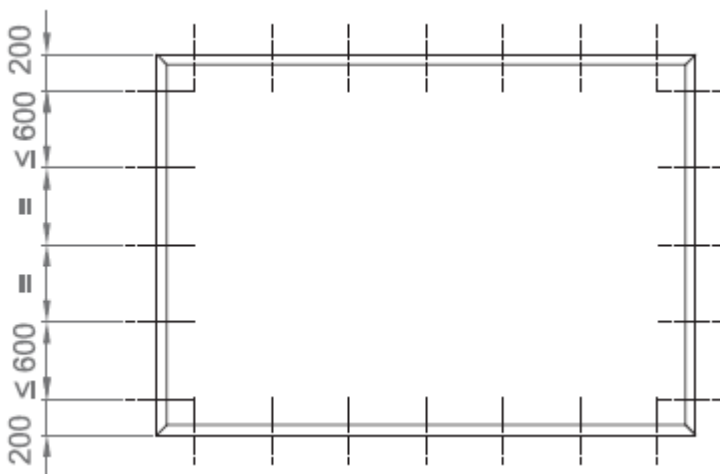
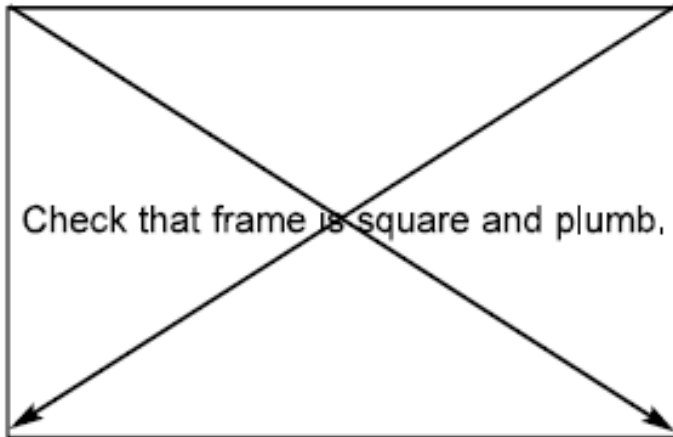
Cill options

The frame can be fixed onto the substrate ensuring drainage is in place, or onto bespoke pressing, or alternatively standard cill extensions are available as below:

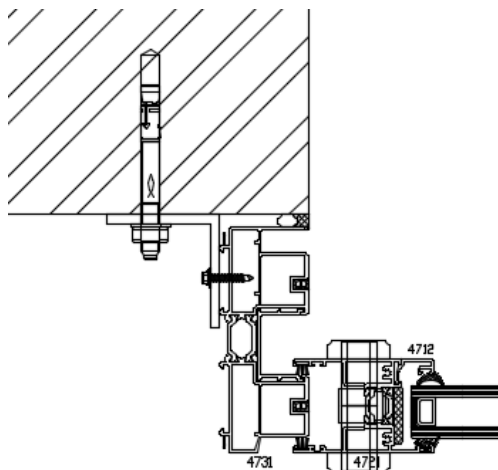


Fitting the frame

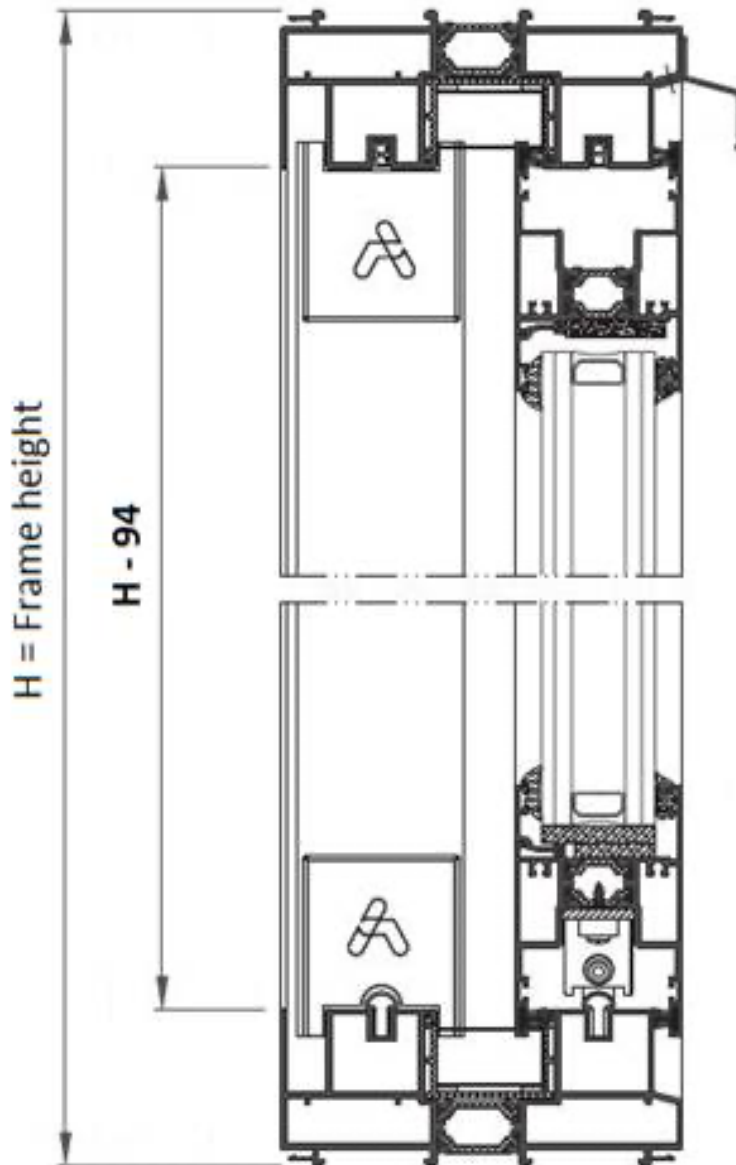
Before installing the frame check to insure it is square and plumb. It is recommended that the frame is laser levelled in both planes to ensure it is correct.



Secure fixings should be made through the frame (or on appropriate straps) at centres no greater than 200mm from each corner and 600mm intervals.



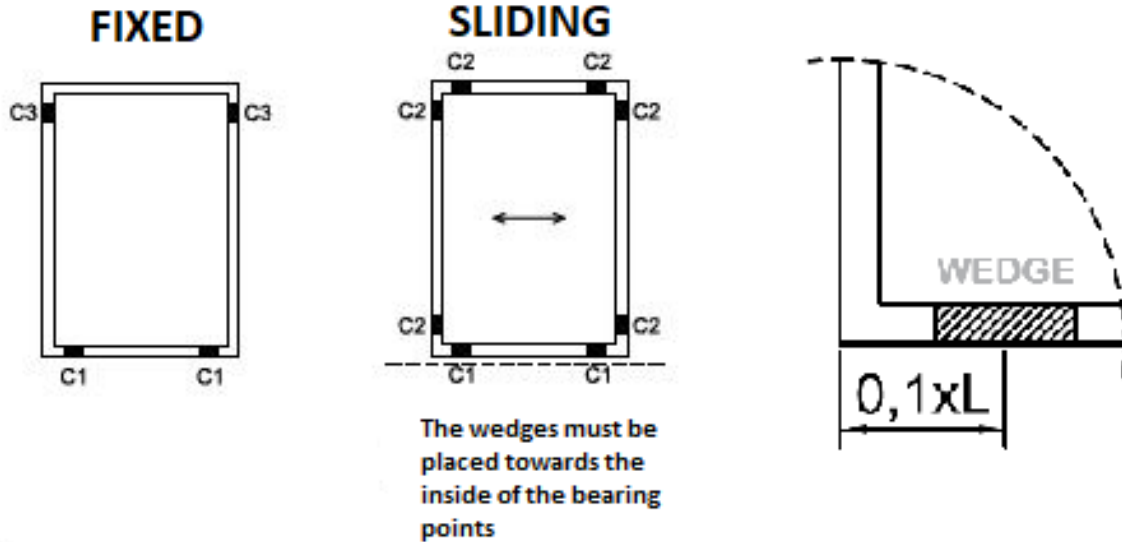
As a double check for level the internal rebate dimension should be 94mm less than frame height. We recommend this dimension is checked at the same centres and in line with frame fixings.



After fixing the frame in the structural opening and performing checks above, the sashes are carefully dropped onto the tracks.

Glazing

Panels should then be glazed, packers applied, beaded and gasketed.



E.

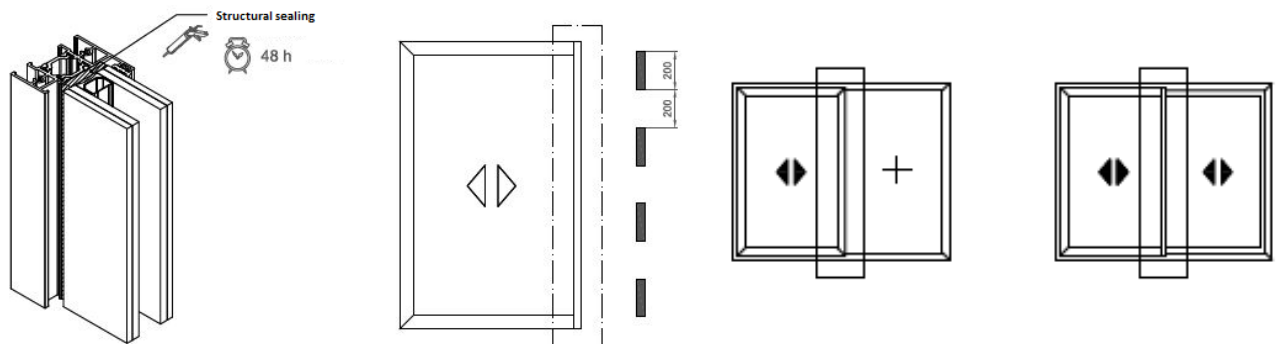
Packers:

C1 – Support packer

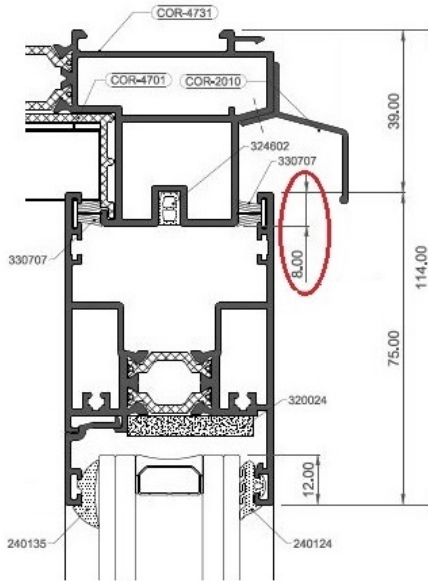
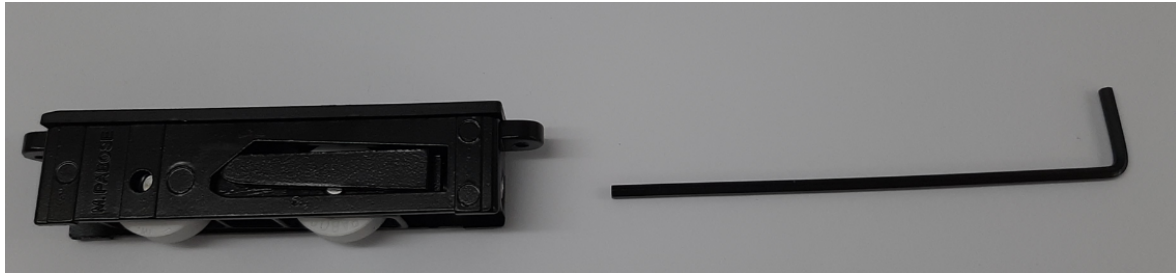
C2 – Perimeter packer

C3 – Security packer

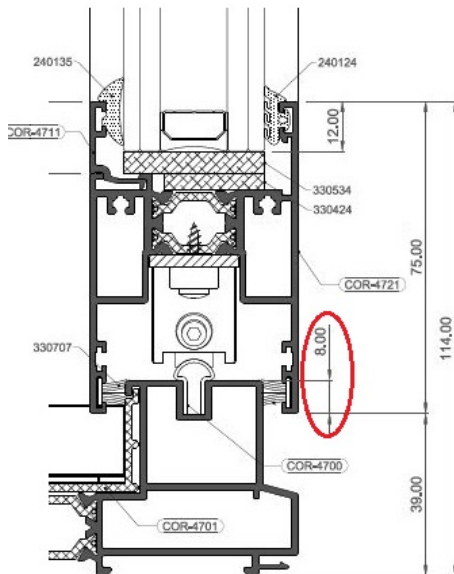
For sashes over 1800mm in height it is recommended to apply structural silicone such as Sika SG-20 to the edge of the glazed unit and the interlocks at 200mm intervals. Avoid direct contact between EPDM joints and structural silicone.



Once glazing is completed the roller wheels **MUST** be adjusted using the allen key provided to ensure each panel overlaps the frame by ~8mm



After installing the frame and the sashes make sure the doors run smoothly and lubricate / adjust as necessary.



Locks & Security

?

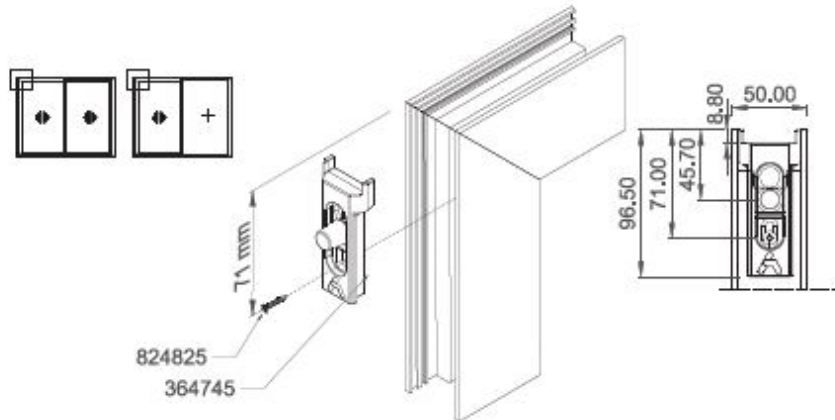
?

?

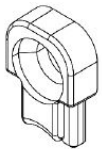
Ancillary Items:

Please check if the following items have been fitted in the factory or they have been supplied loose:

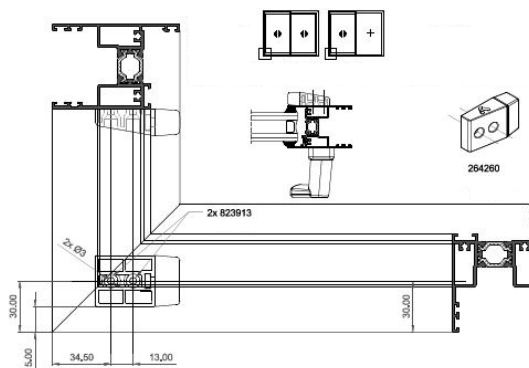
- The Guide fork with robber stop 364745 on the sashes



- The Anti-lift 291515 on the frame, above the top wedge



- Sliding sash bump stop 264260 (black) or 264261 (white) are set as standard to allow the maximum clear opening of the doors. If the handle is left in the open position, then the handle will strike the door interlock. These can alternatively be supplied loose for installation on site in the clients preferred position.



FOR ASSISTANCE PLEASE CALL 01923 225855