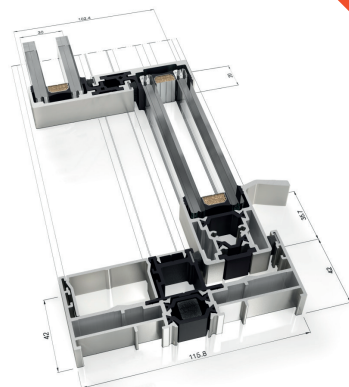
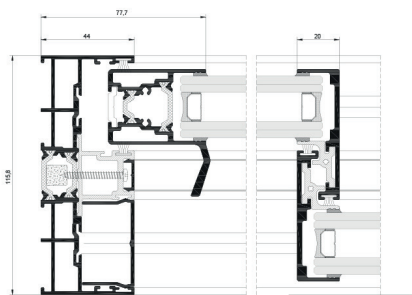




PLUSGLIDE VISION

A+PLUS
ALUMINIUM
apluswindows.co.uk

Ultra slim sliding door with a 20mm sightline. An elegant minimal frame sliding door system offering a wide range of options, including pocket frame, corner detail, up to six panels and now available with NEW optional concealed locking system.

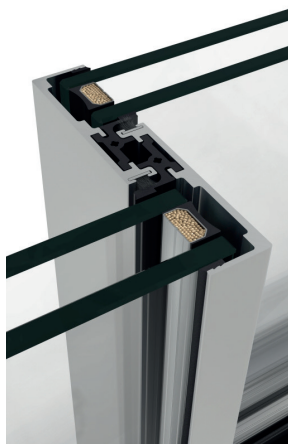


PLUSGLIDE VISION



**Concealed
Centre Lock Option**

Thermally broken sliding door, with the slimmest sightlines available. The system is designed to be suitable for small and large apertures enabling the maximum use of glass. The product is designed to be built in to the structure to minimise the amount of frame visible, and additionally can offer a pocket frame option allowing a panel to be slid into the wall cavity thereby providing the maximum clear opening possible.



MAX GLASS WEIGHT
320kg / Panel

MAX GLAZING WIDTH
30mm

AIR PERMEABILITY
CLASS 4

WIND RESISTANCE
CLASS C5

EXCELLENT ENERGY EFFICIENCY
U-values from 1.3 W/m²K*

MAX PANEL SIZE
2.5m (w) x 3.0 m (h)

NOISE PROTECTION
Up to 41dB acoustic reduction

EXCEPTIONAL WATER TIGHTNESS
CLASS 7A

OPENING OPTIONS

2, 3, 4 & 6 sash | Choice of single, double & triple track: (1 sash+1 fixed light)
90 Degree internal or external Corner option | Pocket Frame: 1 & 2 sashes

*dependent on product configuration, dimensions and glass

WEATHER RESISTANCE

All of our systems are tested to guarantee the very best performance in water tightness, air permeability and wind loads, achieving the maximum result in each category.

THERMAL PERFORMANCE

Energy efficiency is a vital element in building design, with demands made by both the architect and end-user – to reduce environmental impact and heating costs. Our systems are designed with high levels of insulation, creating comfortable homes right across the world.

ACOUSTIC INSULATION

Outstanding acoustic performance ensures that the home remains a private, intimate space free of external noise pollution.

MODERN AESTHETICS

We manufacture bespoke window, door and façade systems tailored to each individual project. The designs balance aesthetics with functionality and technical requirements.

UNLIMITED COLOUR RANGE

To add colour to the interior and exterior of the building, the aluminium frame can be powder coated or anodised on both sides,

with a dual-colour option. For powder coating, choose from any RAL colour with metallic, textured and wood finishes also available.

NOTE: The bottom rail of sliding sash is manufactured from extruded black polyamide and therefore we recommend doors are black or dark grey in colour to minimise contrast.

LONG-LASTING PERFORMANCE

Aluminium is one the most durable and sustainable materials available. It has the strength and resistance to last a lifetime.

SUSTAINABLE SPIRIT

We are committed to minimising waste and the environmental impact of its products and manufacturing processes, through the use of sustainable raw materials and products, and the limitless recyclability of aluminium.

Our continued commitment to innovation allows us to offer high value-added products that maximise energy efficiency, thermal and acoustic performance and weather resistance.

T 01923 225855 **F** 01923 256106 **E** sales@apluswindows.co.uk **apluswindows.co.uk**
Units 14-18 | Moor Park Industrial Centre | Tolpits Lane | Watford | Hertfordshire | WD18 9EZ

